

**EX800003, EX801900**

**Para Ordenar Repuestos o Asistencia Técnica, Sírvase Llamar al Distribuidor Más Cercano a Su Domicilio**

Sírvase suministrar la siguiente información:

- Número del modelo
- Número de Serie (de haberlo)
- Descripción y número del repuesto según la lista de repuestos

Puede escribirnos a:

Campbell Hausfeld  
Attn: Customer Service  
100 Production Drive  
Harrison, OH 45030 U.S.A.

No. de Ref.	Descripción	EX800003	EX801900	Ctd.
1	Ensamblaje de cabezal/motor	WL373000AJ	WL373001AV	1
2	Tanque gemelo de 15,14 L	AR045800CG	AR057800AV	1
3	Defensa de goma moldeada	ST158300AV	ST158300AV	4
4	Tornillo para la pata	T073276AV	T073276AV	4
5	Llave de drenaje	D-1403	D-1403	2
6	Tubo flexible de 6,4 mm (1/4")	ST117802AV	ST117802AV	1
7	Niple	HF002401AV	HF002401AV	1
8	Presostato	CW211300AV	CW211300AV	1
9	Enchufe	ST022500AV	ST022500AV	1
10	Conector de presión de 9,5 mm (3/8")	ST119305AV	ST119305AV	1
11	Regulador	WL017601AV	WL022500AV	1
12	Válvula de seguridad de 11,38 bar	V-215106AV	V-215106AV	1
13	Descargador	CW210000AV	CW210000AV	1
14	Relevo de tensión	CW209600AV	CW209600AV	1
15	Tornillo del relevo de tensión	ST209800AV	ST209800AV	1
16	Cordón	EC012600AV	EC012600AV	1
17	Válvula de chequeo	WL212200AJ	WL212200AJ	1
18	● Tubo de salida	WL016200AP	WL016200AP	1
19	● Tuerca	ST039700AV	ST039700AV	1
20	● Manga	ST039800AV	ST039800AV	1
21	Conexión del orificio de salida	T072224AV	ST072224AV	1
22	Perno del hombro	ST158000AV	ST158000AV	3
23	Buje de goma	WL003203AV	WL003203AV	2
24	Buje de goma (Posterior)	WL003202AV	WL003202AV	1
25	Tapa	WL012404AV	WL012404AV	1
26	Tornillo de la cubierta	ST129302AV	ST129302AV	2
27	Tornillo de la cubierta	ST129301AV	ST129301AV	1
28	Asa	ST160001AV	ST185600AV	1
29	Filtro	L012000AV	WL012000AV	1
30	Elemento del filtro	WL012300AV	WL012300AV	1
31	Barra protectora	WL020100AV	WL020100AV	1
32	Acoplador	HF203300AV	HF203300AV	2
33	Manómetro de salida	GA016705AV	GA016900AV	1
34	Manómetro del tanque	GA016709AV	GA016901AV	1
35	Tornillo de 6,4 mm (1/4") - 20 x 12,7 mm (1/2")	ST085405AV	ST071626AV	2
36	Tornillo autorroscante de 6,4 mm (1/4") - 20 x 12,7 mm (1/2")	ST074415AV	ST074415AV	4
37	Ménsula del panel de control	WL021300AV	WL021300AV	1
38	Conector de presión de 9,5 mm (3/8")	ST119704AV	ST119704AV	1
39	Tubo de nilón de 9,5 mm (3/8")	WL021400AV	WL021400AV	1
40	Cubierta de interruptor de presión	CW211700AV	CW211700AV	1

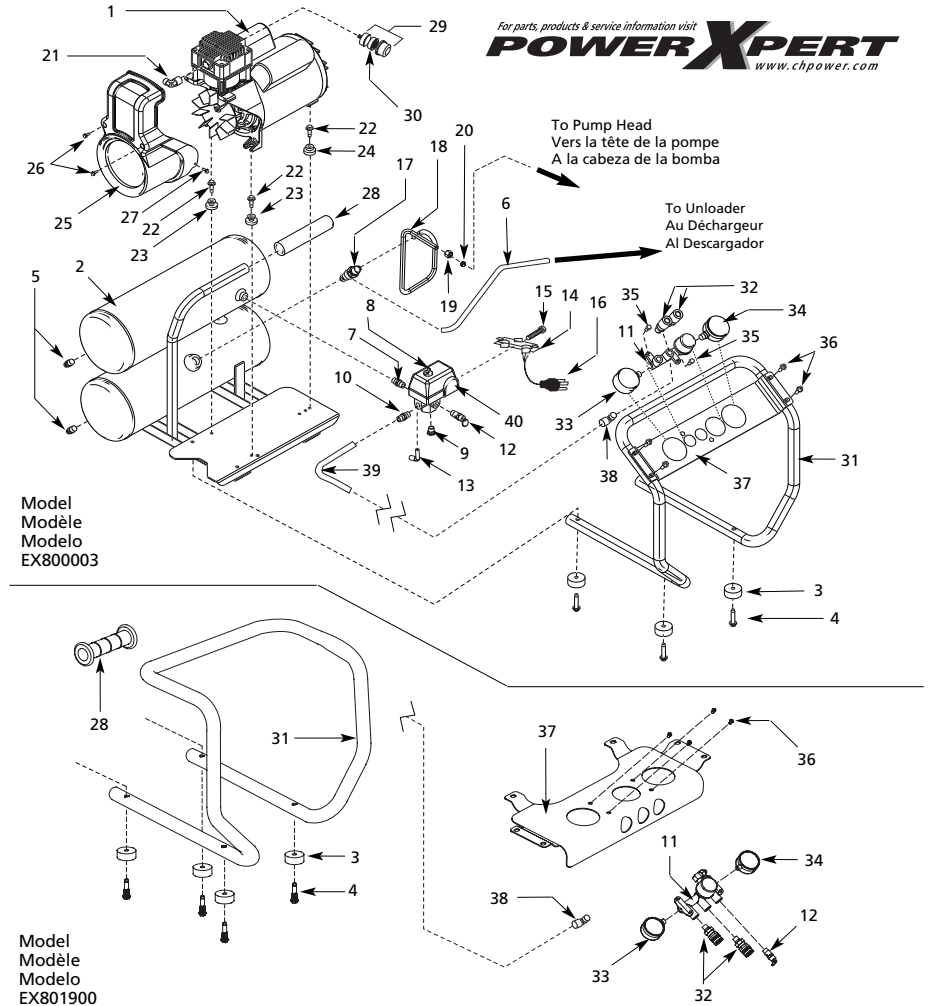
**JUEGOS DE REPUESTOS**

● Juego de tubo de salida (con la válvula de chequeo)	WL209308SJ	WL209308SJ	1
---	------------	------------	---

**Portable Air Compressor  
Compresseur d'Air Portatif  
Compressores d'Aire Portátil**

**Replacement Parts List  
Liste de Pièces de Rechange  
Lista de Repuestos**

**EX800003, EX801900**



For parts, products & service information visit  
**POWER XPERT**  
www.chpower.com

**EX800003, EX801900**

**For Replacement Parts or Technical Assistance, Call 1-800-543-6400**

Please provide following information:  
 -Model number  
 -Serial number (if any)  
 -Part description and number as shown in parts list

Address parts correspondence to:  
 Campbell Hausfeld  
 Attn: Customer Service  
 100 Production Drive  
 Harrison, OH 45030 U.S.A.

Ref. No.	Description	EX800003	EX801900	Qty.
1	Pump/motor assembly	WL373001AJ	WL373001AV	1
2	4 gal. twin tank	AR045800CG	AR057800AV	1
3	Molded rubber bumper	ST158300AV	ST158300AV	4
4	Foot screw	ST073276AV	ST073276AV	4
5	Drain cock	D-1403	D-1403	2
6	1/4" Flexible tube	ST117802AV	ST117802AV	1
7	Nipple	HF002401AV	HF002401AV	1
8	Pressure switch	CW211300AV	CW211300AV	1
9	Plug	ST022500AV	ST022500AV	1
10	3/8" Push to connect	ST119305AV	ST119305AV	1
11	Regulator	WL017601AV	WL022500AV	1
12	165 psi Safety valve	V-215106AV	V-215106AV	1
13	Unloader	CW210000AV	CW210000AV	1
14	Strain relief	CW209600AV	CW209600AV	1
15	Strain relief screw	ST209800AV	ST209800AV	1
16	Cord	EC012600AV	EC012600AV	1
17	Check valve	WL212200AJ	WL212200AJ	1
18	● Exhaust tube	WL016200AP	WL016200AP	1
19	● Nut	ST039700AV	ST039700AV	1
20	● Ferrule	ST039800AV	ST039800AV	1
21	Exhaust fitting	ST072224AV	ST072224AV	1
22	Shoulder bolt	ST158000AV	ST158000AV	3
23	Rubber bushing	WL003203AV	WL003203AV	2
24	Rubber bushing (Rear)	WL003202AV	WL003202AV	1
25	Shroud	WL012404AV	WL012404AV	1
26	Shroud screw	ST129302AV	ST129302AV	2
27	Shroud screw	ST129301AV	ST129301AV	1
28	Hand grip	ST160001AV	ST185600AV	1
29	Filter	WL012000AV	WL012000AV	1
30	Filter element	WL012300AV	WL012300AV	1
31	Roll bar	WL020100AV	WL025500AV	1
32	Coupler	HF203300AV	HF203300AV	2
33	Outlet gauge	GA016705AV	GA016900AV	1
34	Tank gauge	GA016709AV	GA016901AV	1
35	1/4"-20 x 1/2" Screw	ST085405AV	ST071626AV	2
36	1/4"-20 x 1/2" Thread cutting screw	ST074415AV	ST074415AV	4
37	Control panel bracket	WL021300AV	WL021300AV	1
38	3/8" 90° Push to connect	ST119704AV	ST119704AV	1
39	3/8" Nylon tube	WL021400AV	WL021400AV	1
40	Pressure switch cover	CW211700AV	CW211700AV	1
<b>REPAIR KITS</b>				
●	Exhaust tube kit (with check valve)	WL209308SJ	WL209308SJ	1

**EX800003, EX801900**

**Pour Pièces de Rechange ou assistance technique, appeler 1-800-543-6400**

S'il vous plaît fournir l'information suivante  
 -Numéro de modèle  
 -Numéro de série (si applicable)  
 -Numéro et description de pièces

Correspondance:  
 Campbell Hausfeld  
 Attn: Customer Service  
 100 Production Drive  
 Harrison, OH 45030 U.S.A.

N° Ref.	Description	EX800003	EX801900	Qte.
1	Montage pompe/moteur	WL373000AJ	WL373001AV	1
2	Double réservoir 15,14 L	AR045800CG	AR057800AV	1
3	Pare chocs en caoutchouc mouté	ST158300AV	ST158300AV	4
4	Vis de pied	ST073276AV	ST073276AV	4
5	Robinnet de purge	D-1403	D-1403	2
6	Tube flexible 1/4 po	ST117802AV	ST117802AV	1
7	Raccord	F002401AV	HF002401AV	1
8	Manostat	CW211300AV	CW211300AV	1
9	Bouchon	ST022500AV	ST022500AV	1
10	Raccord de pression de 3/8 po	ST119305AV	ST119305AV	1
11	Régulateur	WL017601AV	WL022500AV	1
12	Soupape de sûreté 1138 kPa	V-215106AV	V-215106AV	1
13	Déchargeur	CW210000AV	CW210000AV	1
14	Soulagement de tension	CW209600AV	CW209600AV	1
15	Vis de soulagement de tension	ST209800AV	ST209800AV	1
16	Cordon	EC012600AV	EC012600AV	1
17	Clapet	WL212200AJ	WL212200AJ	1
18	● Tuyau d'échappement	WL016200AP	WL016200AP	1
19	● Écrou	ST039700AV	ST039700AV	1
20	● Virole	ST039800AV	ST039800AV	1
21	Raccord d'évacuation	ST072224AV	ST072224AV	1
22	Embase de bouton	ST158000AV	ST158000AV	3
23	Douille en caoutchouc	WL003203AV	WL003203AV	2
24	Douille en caoutchouc (Arrière)	WL003202AV	WL003202AV	1
25	Couvercle	WL012404AV	WL012404AV	1
26	Vis de couvercle de protection	ST129302AV	ST129302AV	2
27	Vis de couvercle de protection	ST129301AV	ST129301AV	1
28	Prise de main	ST160001AV	ST185600AV	1
29	Filtre	WL012000AV	WL012000AV	1
30	Cartouche filtrante	WL012300AV	WL012300AV	1
31	Arceau de sécurité	WL020100AV	WL020100AV	1
32	Raccord	HF203300AV	HF203300AV	2
33	Jauge de sortie	GA016705AV	GA016900AV	1
34	Jauge du réservoir	GA016709AV	GA016901AV	1
35	Vis de 1/4 po - 20 x 1/2 po	ST085405AV	ST071626AV	2
36	Vis autotaraudeuse de 1/4 po - 20 x 1/2 po	ST074415AV	ST074415AV	4
37	Fixation de panneau de contrôle	WL021300AV	WL021300AV	1
38	Raccord de pression de 3/8 po	ST119704AV	ST119704AV	1
39	Tuyau de nylon de 3/8 po	WL021400AV	WL021400AV	1
40	Couvercle de manostat	CW211700AV	CW211700AV	1
<b>NÉCESSAIRE DE PIÈCES DE RECHANGE</b>				
●	Nécessaire de tube d'échappement (avec soupape à clapet)	WL209308SJ	WL209308SJ	1