

**//// BULLETIN //// BULLETIN //// BULLETIN ////**

<b>The Campbell Group</b>	Instructions/Attach To: ATD#015002
<b>Tool and Accessories</b>	
Concerning <b>NB0050 Countersinking Fasteners</b>	Date: 3-27-01 Page 1 of 4

**PROBLEM:**

It has recently come to our attention that the NB0050 2" Finish Brad Nailer has had complaints that it will not properly countersink fasteners to .050 " below the surface of some woods. These complaints have involved both the older model without Adjustable Depth Control and the newer model with Adjustable Depth Control.

Note: This situation does not involve the newest model of the 2" Finish Brad Nailer (NB005001) which will soon be available in a kit also identified as NB005099AV.

**SOLUTION:**

First, ensure Adjustable Depth Control is adjusted properly.

Then, decide what range of solution the customer requires:

- 1) Quick Fix – The No-Mar Tip can be removed from the end of the Work Contact Element ( this can be done easily, by pulling down on the rear of the tip).
- 2) Intermediate Fix - The threads on the Work Contact Lower Element can be screwed upward into the Work Contact Upper Element further. This should provide the necessary adjustment for properly setting the fastener.
- 3) The tool can be taken to a Service Center for replacement of the old Driver Blade with a new, extended length Driver Blade, once the new Driver Blade is available.

Engineer Approval: Bobby Lawrence 3/29/01

---

**//// BULLETIN //// BULLETIN //// BULLETIN ////**

**//// BULLETIN //// BULLETIN //// BULLETIN ////**

<b>The Campbell Group</b>	Instructions/Attach To: ATD#015002
<b>Tool and Accessories</b>	
Concerning <b>NB0050 Countersinking Fasteners</b>	Date: 3-27-01
	Page 2 of 4

**Instructions for modifying the Work Contact Element of NB0050 2" Finish Nailer (both types – with or without Adjustable Depth Control):**

First, read all directions thoroughly before proceeding. Refer to Picture on page 4 and the Replacement Parts List if necessary.

The #'s in ( ) refer to reference #'s on Replacement Parts List IN247301AV 4/98

**STEP**

- 1) Disconnect from air supply. Unload all fasteners.
- 2) Remove No-Mar Tip (#53)
- 3) Using a 5mm Allen Wrench, remove top 2 Hex Socket Head Cap Screws (#57) and Spring Lock Washers (#56) that go into Front Housing.
- 4) Using a 4mm Allen Wrench, remove both Hex Socket Head Cap Screws (#28) and Spring Lock Washers (#6) that go into Front Cap.
- 5) Using a 5mm Allen Wrench and a 10mm Wrench, remove Hex Socket Head Cap Screw (#69), Plain Washer (#68) and Lock Nut (#87) that holds Magazine (#70) to the bottom of the Handle.
- 6) Open Quick Jam Removal Door.
- 7) Magazine and Nose (#58) should now disassemble from Body. Be careful not to lose Spring (#48) that sits between the Guide (#47) and the Upper Work Contact Element (#49). Pull the Element (#49) out.
- 8) Twist out the Lower Work Contact Element (#52) out of the Nose. Screw the Work Contact Lower Element into the Work Contact Upper Element till only 2 or 3 threads remain (this should take about 3 or 4 turns). Do not overtighten. On the Models with Adjustable Depth Control, there is a Thumbwheel (#51) and Spring (#50) combination between the Upper and Lower Work Contact Elements. There is no need to remove these, but if they should fall out, the Spring goes into the round slot in the Thumbwheel. The Thumbwheel then goes into the Lower Element; Spring-side away from the No-Mar Tip holder part of the Lower Element.

**//// BULLETIN //// BULLETIN //// BULLETIN ///**

**//// BULLETIN //// BULLETIN //// BULLETIN ///**

The Campbell Group  
Tools & Accessories  
Concerning

**NB0050 Countersinking Fasteners**

Instructions/Attach to:  
ATD#015002  
Date: 3/27/01

Page: 3 of 4

**Instructions for modifying the Work Contact Element of NB0050 2" Finish Nailer (both types – with or without Adjustable Depth Control), continued:**

Reassemble by reversing procedures:

- 9) Twist Lower Work Contact Element (#52) back into proper position in the Nose.
- 10) Insert the rear of the Nose into the Front Cap (#55), lining up tip of Driver Blade (#20, sticking out of Front Cap) and the Work Element Arm (#49) into the Guide (#47) with Spring (#48) between the two pieces (on the Element Shaft #49).
- 11) Put removable Loctite on threads of both of Hex Socket Head Cap Screws (#28) and Spring Lock Washers (#6). Tighten down using 4mm Allen Wrench.
- 12) Do same thing for upper 2 Hex Socket Head Cap Screws (#57) and Spring Lock Washers (#56) that go into Front Housing using a 5mm Allen Wrench.
- 13) Using a 5mm Allen Wrench and a 10mm Wrench, tighten Hex Socket Head Cap Screw (#69), Plain Washer (#68) and Lock Nut (#87) that holds Magazine (70) to the bottom of the Handle.
- 14) Replace No-Mar Tip and shut Quick Jam Removal Door.
- 15) Connect air supply, load and Test Tool. Adjust Adjustable Depth Control (if applicable). Repeat Procedures as necessary to adjust if needed.

If after adjustment Tool will not fire, it is probable that the threads were tightened too far, not allowing Work Contact Element to actuate Trigger. In this case, follow above procedures to lessen the thread tightening a turn or two.

If, however, it is determined that more adjustment is necessary after maximum amount of thread turning is reached (without distorting the proper shape of the Upper (#49) and Lower (#52) Work Contact Element connection *alignment*), then an additional steps may be taken:

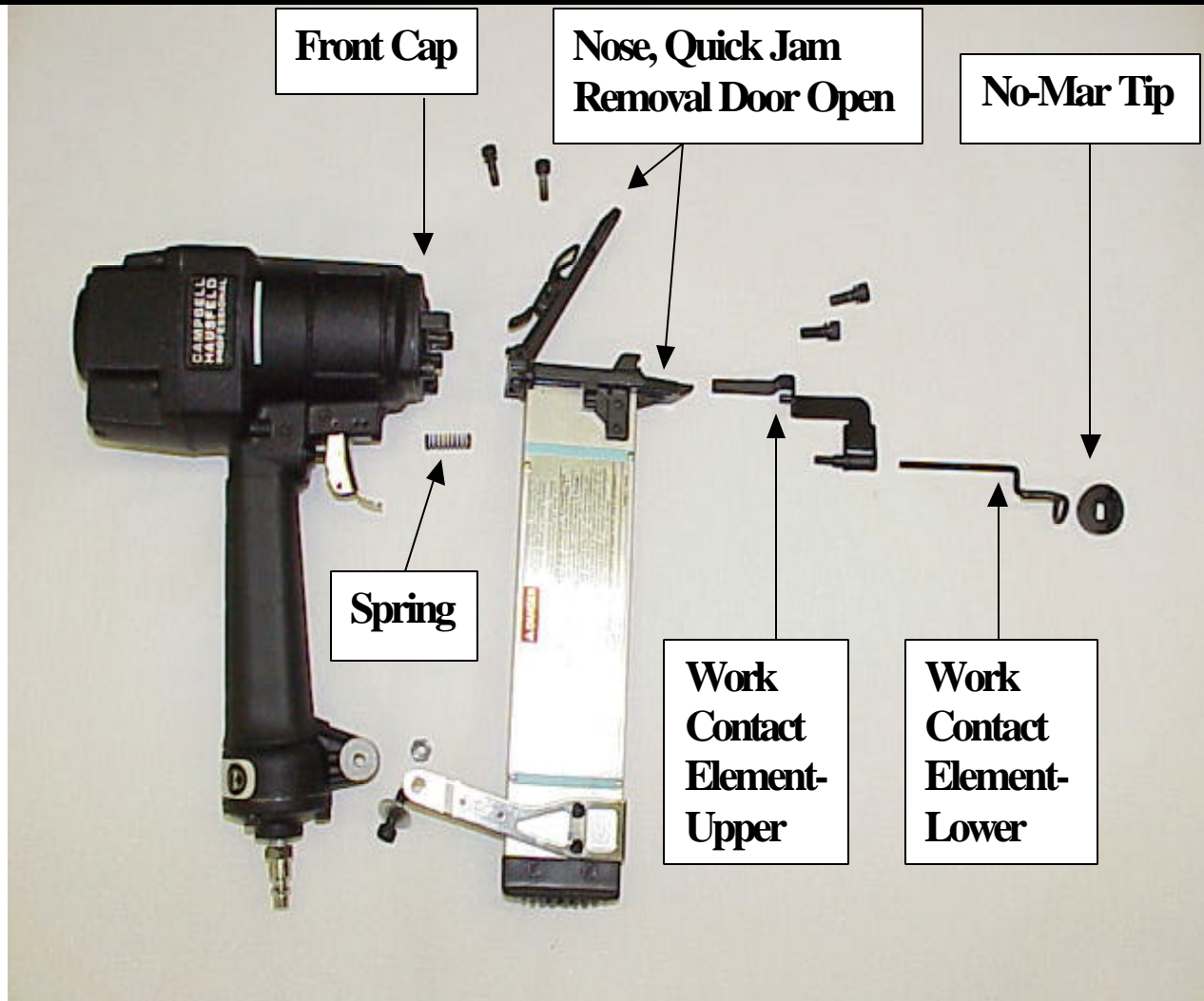
Note: This Procedure *should* only be necessary on the Models with Adjustable Depth Control.

- 16) Follow Procedures to STEP 8). After removing Work Contact Element out of Tool, disconnect the Upper (#49) from the Lower (#52) by unscrewing them.
- 17) Take Lower Work Contact Element (#52) and remove about .040" (or appx. 1mm) of the tip extension beyond the threads. Remove any burs from the tip.
- 18) Reassemble as instructed in STEPS 9) – 15

**//// BULLETIN //// BULLETIN //// BULLETIN ///**

**//// BULLETIN //// BULLETIN //// BULLETIN ////**

<b>The Campbell Group</b>	Instructions/Attach To:
<b>Tool and Accessories</b>	ATD#015002
Concerning <b>NB0050 Countersinking Fasteners</b>	Date: 3-27-01
	Page 4 of 4



**Oldest Model NB0050 (without Adjustable Depth Control)**

Please refer to the above picture and the Replacement Parts List for reference.

**//// BULLETIN //// BULLETIN //// BULLETIN ////**



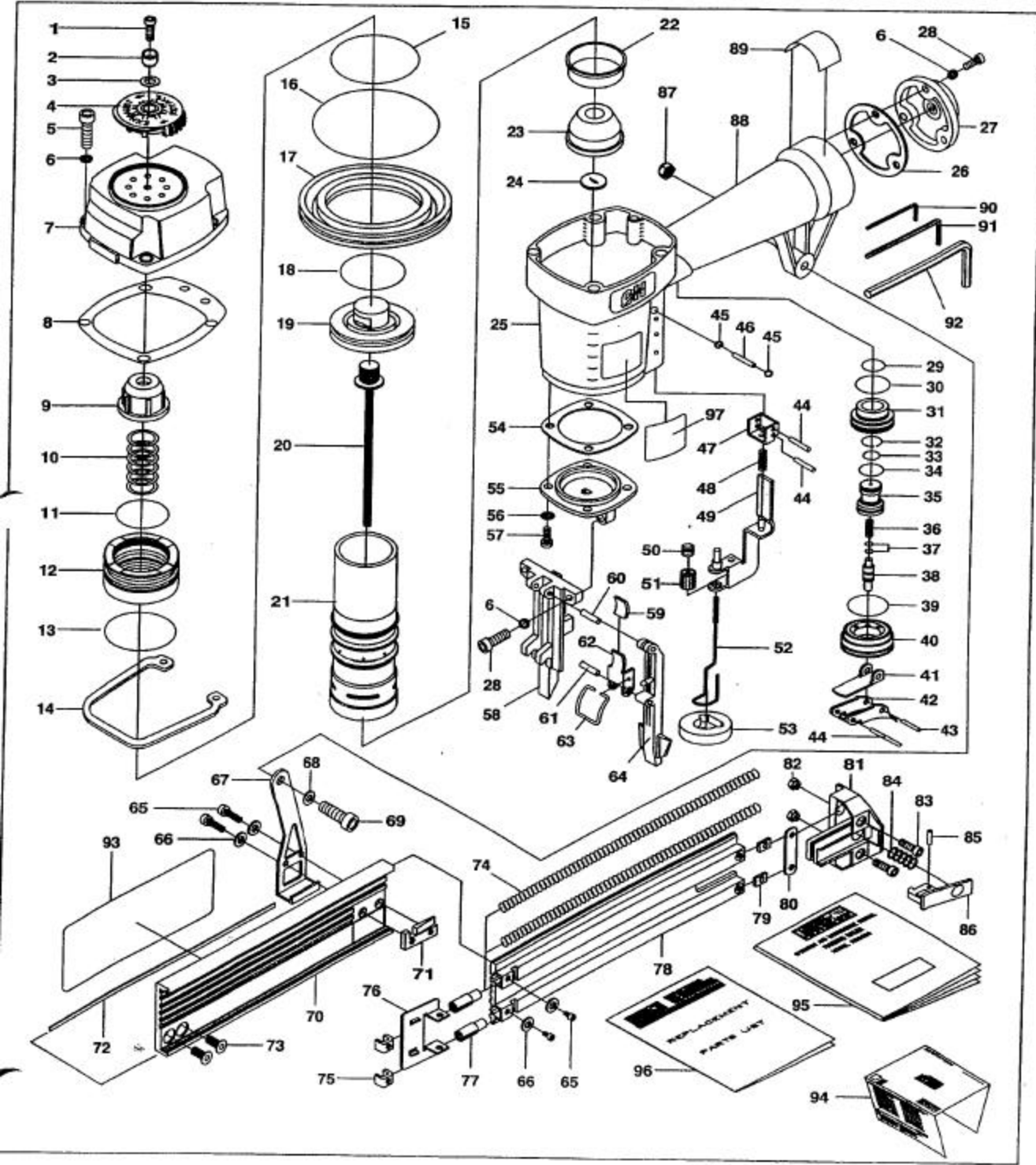
# 2" Brad Finish Nailer

## Clouuse Pour Finition de 2 po

## Clavadora para acabado con clavos de 50mm

Replacement Parts List. Liste De Pieces De Rechange. Lista De Repuestos

**NB0050**



IN247301AV 4/98

## For Replacement Parts, Call 1-800-543-6400

Please provide following information:

- Model number
- Serial number (if any)
- Part descriptions and number as shown in parts list

Address parts correspondence to:

Campbell Hausfeld  
100 Production Drive  
Harrison, OH 45030

Ref. No.	Description	Part Number	Qty	Ref. No.	Description	Part Number	Qty
1	Hex Socket Head Cap Screw	*	1	56	Spring Lock Washer	SV108000AV	4
2	Washer	*	1	57	Hex Socket Head Cap Screw	SV981000AV	4
3	O-Ring	*	1	58	Nose	SV981100AV	1
4	Deflector	*	1	59	Plastic Molded Cover	SV955900AV	1
5	Hex Socket Head Cap Screw	SV977900AV	4	60	Slotted Spring Pin	SV963700AV	1
6	Spring Lock Washer	SV330200AV	9	61	Slotted Spring Pin	SV963800AV	1
7	Cylinder Cap Assembly	SX100200AV	1	62	Latch	SV963900AV	1
8	Gasket - Cylinder Cap	SV978100AV	1	63	Latch Spring	SV964000AV	1
9	Piston Stop	SV978200AV	1	64	Door	SV981200AV	1
10	Spring	SV978300AV	1	65	Hex Socket Head Cap Screw	SV981300AV	4
11	O-Ring	◆, ★	1	66	Spring Lock Washer	SV981400AV	4
12	Head Valve Piston Assembly	SV978500AV	1	67	Mounting Bracket	SX101000AV	1
13	O-Ring	◆, ★	1	68	Plain Washer	SX101100AV	1
14	Retaining Ring	SV978800AV	1	69	Hex Socket Head Cap Screw	SV981700AV	1
15	O-Ring	◆, ★	1	70	Magazine	SX101200AV	1
16	O-Ring	◆, ★	1	71	Magazine Cover Stop	SV981900AV	1
17	Cylinder Sleeve	SV979100AV	1	72	Nail Guide	SV982000AV	1
18	O-Ring	●, ◆, ★	1	73	Hex Socket Head Flat Screw	SV982100AV	2
19	Main Piston	●	1	74	Spring	⊥	2
20	Driver	●	1	75	Front Spring Stop	SV982300AV	2
21	Cylinder	SV979500AV	1	76	Pusher	⊥	1
22	Return Seal	◆, ★	1	77	Spring Guide	⊥	2
23	Bumper	○	1	78	Magazine Cover	SX101300AV	1
24	Driver Guide	○	1	79	Rear Spring Stop	SV982700AV	2
25	Body	SX100300AV	1	80	Magazine End Cap Plate	SV982800AV	1
26	Gasket - End Cap	SV980000AV	1	81	Magazine End Cap	SV982900AV	1
27	End Cap	SX100400AV	1	82	Lock Nut	SV983000AV	2
28	Hex Socket Head Cap Screw	SV315000AV	5	83	Hex Socket Head Cap Screw	SV983100AV	2
29	O-Ring	◆, ▲	1	84	Spring	SV983200AV	1
30	O-Ring	◆, ▲	1	85	Slotted Spring Pin	SV983300AV	1
31	Valve Body - Upper	SV336900AV	1	86	Latch	SV983400AV	1
32	O-Ring	◆, ▲	1	87	Lock Nut	SX101400AV	1
33	O-Ring	◆, ▲	1	88	Hand Grip	SV983600AV	1
34	O-Ring	◆, ▲	1	89	Oil Daily Decal	DK423900AV	1
35	Valve Plunger - Upper	SV337300AV	1	90	Hex Wrench - 3mm	SV109300AV	1
36	Spring	SV980100AV	1	91	Hex Wrench - 4mm	SV109400AV	1
37	O-Ring	◆, ▲	2	92	Hex Wrench - 5mm	SV109500AV	1
38	Valve Plunger - Lower	SV337600AV	1	93	Warning Decal	DK517400AV	1
39	O-Ring	◆, ▲	1	94	Product Registration Card	DR200000AV	1
40	Valve Body - Lower	SV337700AV	1	95	3 Language Instruction Manual	IN247201AV	1
41	Secondary Trigger	+	1	96	Replacement Parts List	IN247301AV	1
42	Primary Trigger	+	1	97	Single Cycle Pin Decal	DK500800AV	1
43	Slotted Spring Pin	+	1	<b>REPLACEMENT PART KITS</b>			
44	Slotted Spring Pin	+	3	●	Driver Kit	SV983700AV	1
45	O-Ring	■	2	◆	Complete O-Ring Replacement Kit	SV983800AV	1
46	Single Cycle Pin	■	1	○	Bumper Kit	SV983900AV	1
47	Guide - Work Contact Element	SV980500AV	1	□	Replacement No-Mar Tips	SV984000AV	1
48	Spring	†	1	*	Deflector Assembly	SV984100AV	1
49	Work Contact Element - Upper	†	1	■	Single Cycle Pin Assembly	SV984200AV	1
50	Spring	†	1	▲	Trigger O-Ring Kit	SV984300AV	1
51	Thumbwheel	†	1	★	Piston O-Ring Kit	SV984400AV	1
52	Work Contact Element - Lower	†	1	‡	Trigger Assembly	SV330100AV	1
53	No-Mar Tip	□, †	1	†	Work Contact Element Assembly	SV984500AV	1
54	Gasket - Bottom	SV980800AV	1	⊥	Pusher Repair Kit	SV984600AV	1
55	Bottom	SV980900AV	1				

Items marked with a symbol available as kits or assemblies only.